

compass

jobs fair



14 March 2022

Birmingham Conference
and Events Centre

www.compassjobsfair.com

9.30am - 4.30pm

Social Work Innovations Event Programme

Event sponsor



BIRMINGHAM
CHILDREN'S TRUST

Media partner



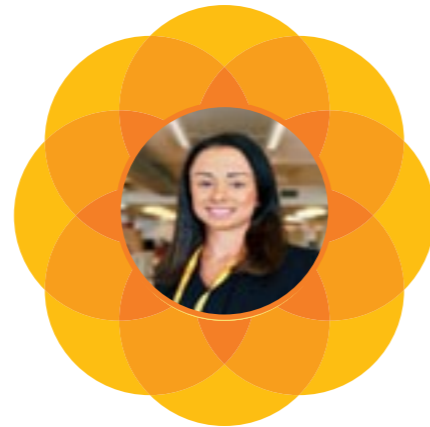
Social Work Today

Retain as supporting evidence for your CPD

JOIN BIRMINGHAM'S BIGGEST FAMILY

"Working in Family & Friends is rewarding. It enables me to support children to live within their family and friends network, where we know they do best."

Natasha Al-Mossili
Team Manager



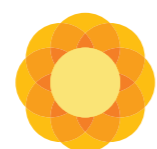
"We aim to create a home away from home. We have the best people working here, fantastic facilities and fun experiences. Edgewood Road enables children to have experiences every child should have."

Anne Fenton
Registered Manager



Start your journey with us today

Register on our talent pool and apply for jobs with us:
birminghamchildrenstrustjobs.com



**BIRMINGHAM
CHILDREN'S TRUST**



PUBLISHING & EVENTS DIRECTOR
Kellie Doubtfire

CONTENT EDITOR
Rik Clarke

EVENT TEAM
Amelia Barnie
Ashley Dzumbira
Catherine Whitehead

EVENT ADMINISTRATOR
Carole Rhodes

MANAGING DIRECTOR
Mark Pearson

COMPASS
The Barn, St James' Square,
Wadhurst, East Sussex TN5 6AP
T: 01892 784804; F: 01892 784796
www.compassjobsfair.com

Event sponsor
 **BIRMINGHAM
CHILDREN'S TRUST**

Welcome from COMPASS4
A message from Kellie Doubtfire, Publishing & Events Director

Visitor information7
Important information to help you make the most of the event

Welcome from our sponsor8-9
A message from Andy Couldrick, Chief Executive, Birmingham Children's Trust

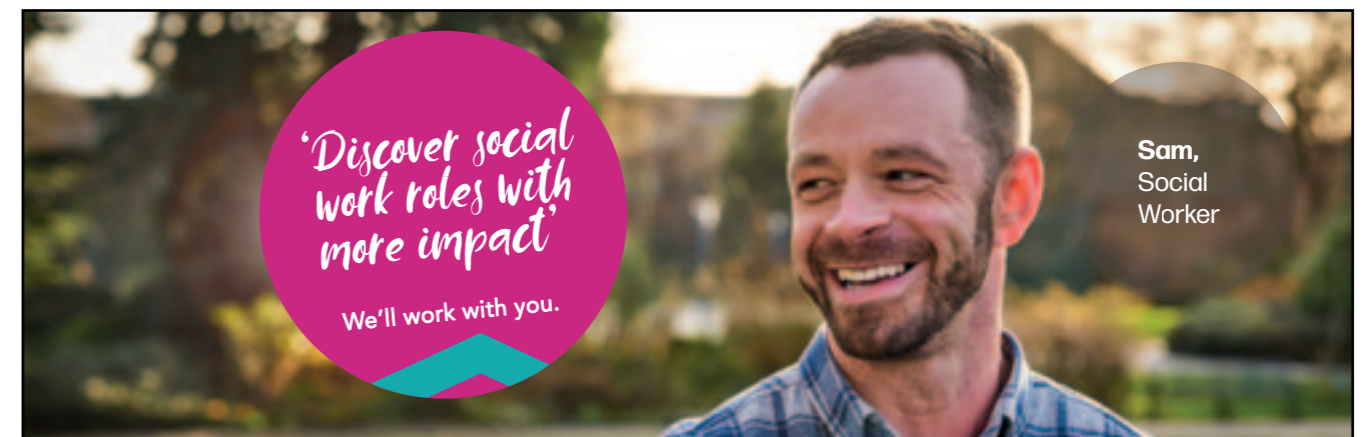
Exhibitors11-15
Information snapshot on each exhibitor

Event floor plan18-19
Your route around the event

Conference timetable20-21
An at-a-glance guide to the day's programme

Conference programme23-37
Descriptions of each seminar

The Social Work Cinema38
A timetable of films showing throughout the day



When you join us, you won't just be working for us. We'll be working with you. We'll give you the support you need to do your job, achieve the best outcomes, and transform lives. And we'll help you to grow and develop, every step of the way. Whether it's through the latest technology for hybrid working, a creative new practice, or a better work-life balance, we're committed to encouraging the very best results for you too.

Roles in Children's Services
We're rated 'good' by OFSTED and with our new operating model we remain ambitious. We have roles from family practitioners to social workers and senior practitioners across our different teams.

Roles in Adult Services
We're optimistic about the future and ambitious for our residents. Why not join us in one of our caring careers with opportunities including Front Line Care roles and Social Work/ Professional roles.

Find out more, register your interest & apply:



SCAN ME

Or visit us on stand 23 at the Compass Social Work Jobs Fair on 14 March 2022.



Social work in 2022: A focus on wellbeing and self-care

Kellie Doubtfire, Publishing and Events Director, outlines how you can make the most of the event.



Kellie Doubtfire, Publishing and Events Director, COMPASS

How are you? It's a question we often ask politely, but over the past two years has come to mean so much more. The focus of the conference today is wellbeing and self-care: a matter which has become increasingly prevalent from evidence presented by the Social Workers Union

(SWU) highlighting that the strains from the pandemic have made a serious impact on the health and morale of social workers. You can hear more from SWU about how to improve stress and working conditions for UK social workers and this is complimented by seminars from Dr Neil Thompson on how to survive in social work and the debate: Who is responsible for stress?

of the importance of ensuring that support to those working on the front line is the very best it can be with supervision, learning and development, emotional health and well-being for all social workers. Walsall Council will also share details of a pilot project centred around staff wellbeing with other exhibitors discussing their training and support programmes on their exhibition stands.

I'd like to thank our Event Sponsor – Birmingham Children's Trust – and all of the organisations taking part in the exhibition as today's event would not be possible without them. It's fantastic to see so many local authorities and social work employers, service providers, and third sector organisations taking part. I hope you will find the time to speak to as many exhibitors as you can to find the latest job opportunities and take the next step in your social work career, as well as find out about innovative services and projects. I'd also like to thank the event's Media Partner – Social Work Today – for providing unique coverage of the event.

As well as providing the opportunity to speak to so many social work employers and share amazing practice, this event is a celebration of you and your achievements. We hope you enjoy your time at the event today. The next events will take place in London on 9 May and 21 November 2022 and we will be back here in Birmingham on 20 March next year. Thank you for supporting us and we look forward to meeting you throughout the day and at future events, whether online or face-to-face.

“As well as providing the opportunity to speak to **so many social work employers** and share amazing practice, this event is a **celebration of you and your achievements.**”

The employers here today are aware of the support needed for their workforce and want to discuss how they can provide conditions that enable the best possible environment for you to practice. Jenny Turnross, Director of Practice, Birmingham Children's Trust will be discussing their practice priorities, a reminder

Employee wellness ... key to a productive workplace or just another fad?

The idea that a happier and healthier workplace is a more productive workplace where staff are more engaged and stay around longer is not new, but it is now very much at the forefront of HR and leadership thinking. It is good that these issues are getting the attention they deserve but, as so often happens when topics hit the headlines, there is a bandwagon effect with all sorts of people trying to cash in, without necessarily having the experience or expertise to manage the challenges involved. So, when investing in employee wellness services, make sure you are dealing with the experts.

Vigoroom is an employee wellness platform, with over 1,000 resources: videos, e-learning courses, workouts, structured programmes and challenges. Much more than just information and all expert led! An ideal solution for staff retention problems and a fantastic benefit for all staff. It has been established for over six years and continues to go from strength to strength. At the helm is Professor Neil Thompson, renowned author, educator and adviser and an internationally recognised expert in human relations and wellbeing. He is the author of The Managing Stress Practice Manual and co-author of How to Survive in Social Work, both geared towards improving recruitment and retention.

Why not give Vigoroom a try? We can organise a free trial for your organisation. Pass this leaflet on to your HR team or a senior manager. Or if you are a HR professional or senior manager, contact us directly on 02039 788 454 or visit www.vigoroom.co.uk/arrange-a-trial.



BASW

The professional association for social work and social workers

FOR SOCIAL WORKERS:

Supporting, protecting and inspiring social workers in all roles, and the next generations of professionals.

FOR SOCIAL WORK:

Developing professional ethics, practice, knowledge, research and learning.

FOR A BETTER SOCIETY:

Speaking out for social work and social workers on social justice, equality, poverty, human rights, oppression and other vital social issues in the UK and internationally.

BE PROTECTED £5 million of professional indemnity insurance. *Please note: students members are only covered for professional placements.**

BE REPRESENTED Get advice from BASW Advice and Representation, a team of qualified social workers, for professional and regulatory help. Opt in to the Social Workers Union from £2.08 per month for full, tailored employment help and protection services.*

BE PROGRESSING Develop your career. Learn about the latest social work practice developed by and for social workers. Log your CPD from a range of free or discounted training, online resources and events.

BE INFORMED Professional Social Work (PSW) magazine – the UK's only printed social work magazine – delivered free to your door ten times a year. Member-only free access to selected resources online.

BE ETHICAL BASW's Code of Ethics along with a full range of guidance and policies, upholds the highest professional standards and practice.

BE SAVING Save up to 75% on social work journals and books as well as discount shopping deals at major retailers. Plus heavily discounted and free CPD and events. 50% discount on student membership for first post-qualifying year.*

BE SUPPORTED Free Professional Support Service – offering essential space and support for members to talk and think through issues, including Covid 19. Apply for financial support grants for education, hardship or international work.

BE RECOGNISED Show your commitment to professional practice and use MBASW after your name.

BE INDEPENDENT A bespoke membership for self employed social work professionals. Access Social Work Employment Services – a competitively priced exclusive umbrella service for BASW members*. Be listed as a specialist in our directory.

BE CONNECTED Meet like-minded colleagues, through branches, events and special interest and other groups to share ideas, discuss practice, policies and develop our profession together. Join our community of social workers online – through Twitter, Facebook and LinkedIn.

BE HEARD The powerful voice of over 22,000 members, building the strength and influence of social work and calling for urgent action on issues that really matter. Be active in campaigns. Join one of our member committees, groups and networks to shape policies.



BASW England

The professional association for social work and social workers

BASW is the independent professional association for social work.

Join online at www.basw.co.uk

* Terms & Conditions apply – for full details visit www.basw.co.uk

Visitor information

You will find the COMPASS Jobs Fair team on Stand 19

You'll recognise us by our blue/white T-shirts and we can help you with any queries or requests.

CPD certificates

If you would like printed certification of your full day of CPD training, come to Stand 19 at 4.00pm. You can also hold onto your copy of this event programme to assist in providing evidence of the day's training for your CPD portfolio.

COMPASS wine reception

We would like to invite all visitors to a wine reception on Stand 19 at 4.00pm. Unwind after an exciting day of networking, training and job searching with organisers, exhibitors and visitors alike. Non-alcoholic options are available.

Seminar entry

Entry to all seminars and *the Social Work Cinema* is free, but numbers are restricted to keep everyone safe. Please arrive in plenty of time to ensure you get a seat. Please note: some seminars and films are being repeated to reduce crowding.

After each seminar

All seminar attendees will need to leave the room between sessions to allow for cleaning and set-up. This is a venue requirement to facilitate set-up for the next speaker and ensure the room is not over capacity for the next seminar.

Would you like to exhibit next year?

To reserve an exhibition stand at the COMPASS Jobs Fair in Birmingham next year, or at any of our other events, please speak to one of the COMPASS team on Stand 19.

Photographs

Photographs are taken throughout the day. These will be used in promotional literature for future events. Attendance at the event signifies acceptance of this.

Thank you for assisting us with keeping today's event COVID-safe. We know that you will keep your distance and respect the space of others.

Food and drink

Food and drink is available throughout the day at the catering point in the Exhibition Hall, next to the Organiser's Desk. There is a selection of hot and cold food. Cash, PayPal and cards are accepted.

Menu

Hot Food

Jacket potato served with fillings of:

Cheese

Beans

Beef or 3 Bean Chilli

Tuna Mayo

Coleslaw

£5.00 with two fillings

Cold Food – freshly made to order

Pulled pork & stuffing rolls with apple sauce £5.00

Warm chicken Caesar salad boxes £5.00

Freshly made 10" baguettes – variety of fillings £3.00

Warm chocolate brownie and whipped cream £3.00

Drinks

Tea, coffee & hot chocolate £1.50 (soya milk available)

Water & soft drinks £1.50

Crisps, snacks & chocolate £1.00



Find us on Facebook:
Compass Jobs Fair



Follow us on Twitter:
@COMPASSEventsUK
Tweet about this event:
#CJFBirmingham



Connect with us on
LinkedIn:
Compass Jobs Fair

We are Birmingham Children's Trust. Join us.

A welcome from Andy Couldrick, Chief Executive, Birmingham Children's Trust



Andy Couldrick, Chief Executive, Birmingham Children's Trust

Welcome back to Birmingham. And welcome back to COMPASS. Birmingham Children's Trust is pleased, once again, to be sponsoring the Jobs Fair, and to be offering a range of sessions and workshops designed to tell you more about our work in the Trust.

The challenge for social work

Locally and nationally, it's been a challenging time for social work and social workers. We have been touched by tragedy and by the need to examine ourselves and our work. We have been reminded again how hard the job

is that we ask social workers to do. Now, more than ever, we must ensure that our support to those working on the front line is the very best it can be: supervision, learning and development, emotional health and well-being, trauma-informed support are all critical ingredients to making good social work possible in difficult times.

Professional judgement

We are moving closer to learning the findings of the 'independent' review of social care led by Josh MacAlister. All of the noise has been about building a more supportive, less 'interventionist' model of support for families. Interesting how this sits alongside the pronouncements of the



Secretary of State following the conviction of the killers of Arthur: any child, about whom there is an inkling of concern, should be in care!

"Now, more than ever, we must ensure support to those working on the front line is the very best it can be."

This rather beautifully sets out the challenge of what we do, every day, with or without child death reviews, independent reviews: we exercise professional judgement, often in the most difficult contexts. And in the vast majority of situations, we do it well and we get it right. I do hope this does not get lost.

Support for your career

Social work with children and families is important, interesting and noble. I'm glad you chose it for your career. I'm glad I chose it for mine. I hope you have some interesting conversations during your day in Birmingham. I hope that many of them are with Birmingham Children's Trust. We'll be pleased to talk with you.

Find out more about Birmingham Children's Trust on our website.

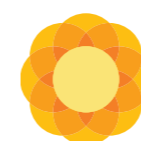
www.birminghamchildrenstrust.co.uk

View our latest vacancies and sign up to job alerts on our dedicated employment site.

www.birminghamchildrenstrustjobs.com

Follow us on Twitter

[@bhamchildtrust](https://twitter.com/bhamchildtrust) [#BirminghamBiggestFamily](https://twitter.com/BirminghamBiggestFamily)



BIRMINGHAM CHILDREN'S TRUST

Seminars by the Trust

Keynote session

10.30 – 11.10 *Innovate*

Practice Priorities: Building a framework for social work practice and practice leadership

Jenny Turnross, Director of Practice

11.30 – 12.10 *Motivate*

The power of relational connection in children's social care: The other half of the ACES story

Lara Timms, Principal Social Worker; and Marie Kershaw, Clinical Psychologist

12.30 – 1.10 *Motivate*

"An interview with an ASYE"

Sophie Gilbert, Practice Academy Manager

1.30 – 2.10 *Motivate*

Responding to domestic abuse in practice

Nikki Plummer, Domestic Abuse Lead Manager

2.40 – 3.20 *Motivate*

Partnership charity Bfriends: The journey so far and future aspirations

Natalie Loon, Operations and Fundraising Manager; and Samantha Yetunde Richards, Trustee, Bfriends Charity

3.40 – 4.20 *Motivate*

A day in the life of a Residential Support Worker

Melanie Page, Head of Residential Service; and Julie Clarke, Registered Manager



MY MONEY | MY LIFESTYLE | MY FUTURE

MY CASH

- Competitive salary
- Pay progression through multiple increments
- Additional role-related allowances
- Up to £8,000 relocation package
- Refund for re-registration of Social Work England

MY DISCOUNTS

- Wider wallet, partner discounts
- Local restaurant and shop discounts
- Discounted gym membership
- Childcare subsidy scheme

MY AWARDS

- Long Service awards
- Recognition awards - Phoenix Awards

MY TIME

- Generous annual leave allowance (27 days +)
- Flexible working arrangements supporting work-life balance
- Annual leave purchase scheme
- Good work/life balance

MY WAY

- Salary sacrifice schemes
- Cycle to work
- MyCar scheme
- Maternity, paternity and adoption leave
- Workplace parking scheme
- Interest free travel loans
- Payroll giving scheme

MY VOICE

- Recognised Trade Unions and active membership
- Employee Networks - BAME, LGBT, Disabled Employee Network
- Engagement surveys and 'Let's Talk' sessions

MY OPPORTUNITIES

- Learning and development
- Professional subscriptions and certified courses
- Extensive training with links to universities
- Regular supervision and support
- Management support and manageable caseloads

MY HEALTH & WELLBEING

- Award-winning Occupational Health Team
- Counselling service
- Health cash plan

MY SAVINGS

- Generous local government pension scheme
- Credit Union
- Pre-retirement courses



Why Coventry: Coventry City Council

Join us in Coventry and you'll be delivering on the ground support to families with all the support and resources you need to do it. You'll build on the progress we've made in the last two years, and work with colleagues who are passionate about the city, its people and its exciting prospects. For more information come and speak to our staff at **stand 26** and visit www.coventry.gov.uk/socialworkjobs

www.coventry.gov.uk/socialworkjobs



Birmingham Children's Trust Stand 1



Birmingham Children's Trust exists to make a positive difference for vulnerable children, young people and families in Birmingham and our focus is clear. Talk to us about the improvements we have already made in children's social work, and how you can be part of our journey. Join us so we can support you in your future career development.

BASW England & SWU Stand 28



Visit BASW & SWU at Stand 28. BASW is the largest professional association for social work in the UK and The Social Workers Union (SWU) is one of the UK's fastest growing trade unions.

Find out more about BASW and our range of services and benefits.

COMPASS Stand 19



Come and meet the team who put this event together.

We specialise in events, marketing, and publishing for the social work and social care sector. We organise three events throughout the year across the UK with the COMPASS Jobs Fairs in London and Birmingham, and the Social Work Show in Manchester, as well as producing social work publications.

Coventry City Council

Stand 26



We're working hard to build something special. Children & families deserve the best outcomes and are at the heart of everything we do. Families are valued, risks managed with the family, families empowered and enabled. We provide an environment where social work can flourish. Our Children's Service is built on relationship and restorative-based practice with our Signs of Safety methodology and family-valued model. www.coventry.gov.uk/socialworkjobs

Devon County Council Stand 22



We look forward to speaking with you today about our exciting career opportunities in DCC in both our Children's Social Work Academy and Adult Social Care, for ASYE Social Workers, Experienced Social Workers, and Team Managers.

Visit us on Stand 22 to find out more.

Dudley Children's Services Stand 2



Through our 'Child Friendly Dudley' agenda, we have the highest ambitions for our children and young people. Relationships are key to our vision and our values and beliefs are founded on the principles of Restorative Practice which provides us with our framework for practice and organisational culture.

Gloucestershire County Council Stand 24



Gloucestershire County Council is committed to investing in you. We have an excellent ASYE programme and our Social Work Academy will support you to develop your career at every stage.

We'd love to talk to you about the fantastic career opportunities we have available now. Find us at Stand 24.

Harrow Council (London) Stand 25



Harrow is a strong, proud, diverse-cultural and forward-looking borough at the forefront of innovation with passion to constantly improve our services to the public. Harrow is committed to a diverse and inclusive passionate workforce. We continue to support our staff, working together with our partners, residents to deliver best outcomes.

HCL Workforce Solutions Stand 11



HCL Workforce Solutions is a leading supplier in the sourcing and placing of qualified social workers and social care professionals throughout the UK in both locum and permanent job roles. We work on behalf of local authorities, charities and the private and voluntary sectors, recruiting professionals in all disciplines including children and families, adoption and fostering, adults and many more.

MAKE DEVON THRIVE



PASSIONATE ABOUT IMPROVING CHILDREN'S LIFE CHANCES?

Join us and make sure that every Devon child, no matter where they live, receives the same high-quality service.

We're proud of our workforce and what has been achieved for children and families in Devon. Social work is at the heart of what we do, and we need brilliant social workers like you to help us continue to deliver our commitment to the people of Devon.

As we work together to achieve positive outcomes for the people of Devon, we'll support you in your role and nurture you on your journey to becoming the best team-player, manager, mentor, and role model that you can be.

Our vision

In Devon, we are committed to working with children, young people and their families in a restorative manner which promotes the health, well-being and good life chances for all, while focussing on protecting children and young people from harm.



A system that places the child and family at the centre

In Children's Services you will work in a system that places the child and family at the centre, involving them in decision making and empowering families to care well for their children.

We are embedding these restorative values across our children's services system, placing good relationships at the heart of what we do and enabling high support and high challenge to secure positive life chances for our children.

We offer excellent training and professional development opportunities to our motivated and aspirational staff who have the drive to develop and progress in their role.

Visit Stand 22 and find out for yourself what Devon Children's Services can offer you, and how we can help you to fulfil your ambitions for excellence.

Visit Stand 22 to meet some of our friendly team and find out more.

You can also learn more at: workingfordevon.com

Exhibitors

Jessica Kingsley Publishers Stand 29



Jessica Kingsley Publishers is the leading publisher of books on autism, social work, arts therapies, gender and related subjects for both professionals and non-professionals.

Leicestershire County Council



Stand 6

Every day, we are committed to working with people in Leicestershire to support them to do everyday things and be active in their community. We work collaboratively with people to promote, maintain and enhance independence so that they are healthier, safer, stronger and more resilient.

Only Social Care Recruitment



Stand 14

A specialist recruitment agency helping Qualified Social Workers find their next role across the UK. We recruit Social Workers, Senior Practitioners, Team Managers, Service Managers, Independent Reviewing Officers, AMHP's and related roles within Adult and Children & Families Social Care.

Only Social Care focuses on commitment to candidates and clients. Devoted consultants will support you, ensuring an efficient, reliable point of contact throughout your journey.

Oxfordshire County Council Stand 7



Rated "Good" by Ofsted, Oxfordshire offers diversity, flexibility, supportive teams and management, and a fantastic Social Work Academy! We're looking for newly qualified and experienced Social Workers to join us. Come and meet us at Stand 7 to find out about our transformational new model, with a significant investment to reduce caseloads.

Powys County Council Stand 12



Powys is a beautiful county in the heart of Wales and within easy access to many major cities. We have some great opportunities for you to join our supportive Adult and Children's Services teams, offering extensive relocation packages should you wish to relocate or fantastic agile working if you don't.

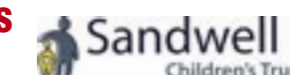
Remedy Social Care Stand 27



Remedy Social Care takes care of your career. Our core principles focus on building strong relationships through regular contact with candidates and clients – professional, prompt and people-focused.

Our extensive knowledge of the social care market enables us to regularly place temporary, contract, project-based, and permanent social workers in a wide range of organisations throughout the UK.

Sandwell Children's Trust Stand 17



Sandwell Children's Trust are looking for exceptional team managers and experienced social workers who are committed and dedicated to improving the lives of children and young people. If this is you, come and talk to us on Stand 17 and hear why this is an exciting time to join us.

Social Work Today Stand 19



Social Work Today is an online platform, developed to give social work professionals a sector-specific space. It creates the networks to provide social work information, webinars, jobs and CPD from across the UK and wider global community. Find out more at www.socialworktoday.co.uk

Staffordshire County Council & MPFT Stand 23



We're recruiting in children and adults' services – come and chat with us! We're empowering our teams to work with pride and purpose. Pride in the great work they do with families and purpose in the real impact on people's lives.

Telford & Wrekin Council Stand 15



Children's Services in Telford & Wrekin have gone from 'Requires Improvement' to 'Outstanding'.

The story is one of transformational change that's created an environment where staff are empowered to work alongside families with evidence-led initiatives and we continue to develop our service provision to achieve the best possible outcomes.

“ My colleagues are ready to help and guide whenever I need them ”

NEW TEAM MEMBER | Joined in October 2021



Boost your social work career in Harrow

Great team

Supportive colleagues from day one

Great location

Best of both worlds: Close to central London, great transport links and minutes from countryside

Recruiting now

Motivated, compassionate, caring and ambitious? Come and talk to us about joining our outstanding team

www.harrow.gov.uk/jobs
Resourcing@harrow.gov.uk



Meet us on Stand 25

Exhibitors

The Mulberry Bush Stand 20



The Mulberry Bush Charity provides integrated therapeutic services, training consultancy and research to all those affected by, or working with, childhood trauma. Our services include:

The Mulberry Bush School
The Mulberry Bush Outreach
The National Centre for Reflective Practice
The Mulberry Bush Research

www.mulberrybush.org.uk

University of Kent: Centre for Child Protection Stand 21



The University of Kent's Centre for Child Protection utilises simulations to inspire and motivate staff to raise professional standards through confident practice.

Based on research, simulations enable players to work through situations, allowing for reflection and review. The Centre also offers a two-year distance learning Master's in Advanced Child Protection.

Vigoroom UK Stand 3



Vigoroom UK offer a sophisticated employee wellness platform with over 1,000 resources, plus support in developing a culture of wellbeing that we can all be proud of.

The platform includes videos, e-courses, workouts, activities, challenges and more – not just information, but expert-led structured programmes to boost productivity and engagement.

Walsall Council Stand 13



Walsall MBC Children's Services is focused on getting it right for children. We are ambitious and on a journey to create the best conditions for social work through restorative, relationship-based practice, locality working, partnering with the What Works Centre to become an evidence-minded organisation, and implementing the Family Safeguarding Model.

West Midlands Social Work Teaching Partnership Stand 8



The West Midlands Social Work Teaching Partnership is a collaboration of local authorities, universities and children's and NHS Trusts. We utilise the collective strengths of our partners to ensure the region is leading pre & post-qualifying social work education, aiming to recruit, develop, and retain highly skilled social work practitioners.

City of Wolverhampton Council Stand 16



We are committed to improving life chances for children, young people and vulnerable adults. The work we undertake is challenging and rewarding. Come and talk to us on Stand 16 and find out what Wolverhampton has to offer you! For information on our current vacancies and what it is like to work for us visit: www.wolvessocialworkjobs.com

Worcestershire Children First Stand 9



Worcestershire Children First is responsible for the delivery of services to children and young people across Worcestershire. We strive for all children to be happy, healthy and safe and our vision is for Worcestershire to be a wonderful place for all children and young people to grow up.

Worcestershire Adult Services Stand 10



Worcestershire Adult Services has a great deal to offer new Social Workers. Front-line practice is supported by a strong drive and specialist staff promoting value-driven, strength-based practice. Our Social Work Academy supports many newly qualified Social Workers and we have many respected, long-serving staff, giving our core teams stability.

Did you know that all exhibitors listed here have an employer profile on the COMPASS website?
www.compassjobsfair.com

Join us at the compass jobs fair **London**

The largest one-day social work recruitment events in the UK

Now with two dates
in 2022

9 May
and
21 November

Register for your free ticket at www.compassjobsfair.com

The COMPASS Jobs Fairs are the largest one-day conferences and exhibitions in the sector with a range of exhibitors including local authorities, independent providers, voluntary sector organisations, universities and publishers.

Speak to sector organisations at the event offering jobs and training for qualified social workers, as well as showcasing innovations and good practice in the sector.

What do our visitors say?

The event was well organised and packed full of a range of interesting seminars. It provided a good opportunity to share experience and network.

Social Worker

As a busy social worker I attended this event last year and due to my insightful experience I promised myself to commit to this every year!

I am pleased to say again that I am feeling more enriched with knowledge and support.

Social Worker

Very informative session on CVs and job applications. It was a great opportunity to talk to local authorities regarding employment opportunities.

Team Manager

I really enjoyed the seminars that were held by COMPASS! All in all, a very informative day especially for someone who needed information to get back into social work. I found the event very empowering!

**Return to Practice
Social Worker**

Informal interviews will be taking place at the events for a range of posts in social work and social care. Exhibition stands will have space for private discussion and interviews for a variety of roles for qualified social workers.

Network with potential employers and other organisations to discuss current issues, innovative practice and pioneering services in social care.

- **The leading social work recruitment events in the UK**
Established as *the* place to take the next step in your career
- **Opportunities for social workers at any level to find their next job**
Meet potential employers face to face and discover the latest career information
- **Meet local authorities on the day**
Discuss your specific needs and jobs with potential employers
- **Independent providers and voluntary sector organisations**
Be updated on current projects and innovations that are changing social work
- **Specialist providers**
Speak to providers showcasing the latest in high-quality care for adults and children



The COMPASS Jobs Fairs will once again feature more than 40 seminars, workshops and films on the latest theory, good practice and policy in social work and social care. This event gives you a full days CPD and the opportunity to network with colleagues.

Registration is now open for visitors to book their place at the next events.

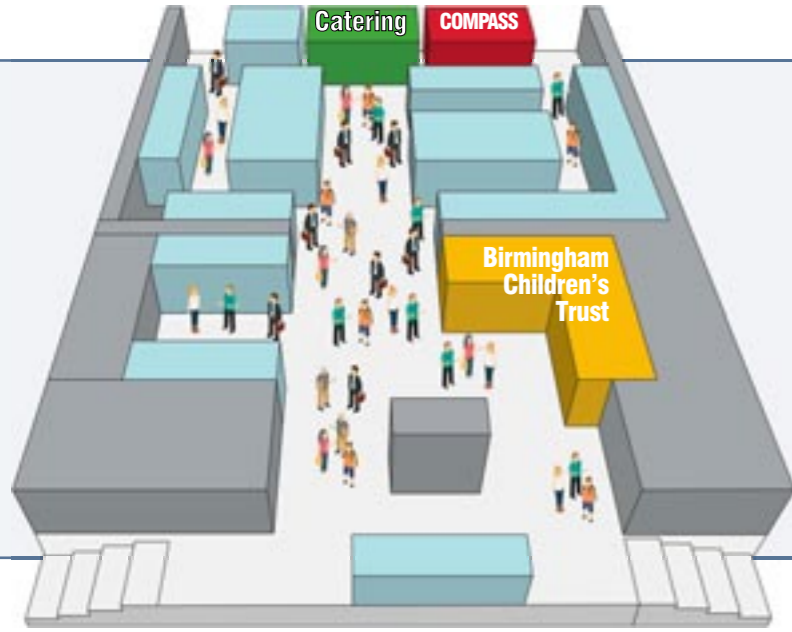
Sponsorship and exhibition space is available with a discount for those who wish to attend both London events.

Email admin@compassjobsfair.com or call us on 01892 784804 for more information.

Register now for your free ticket at www.compassjobsfair.com

Find your way around

Exhibition plan



On this floor

2nd Floor

- COMPASS**
- Catering**
- Exhibition**
- Birmingham Children's Trust**

On this floor

1st Floor

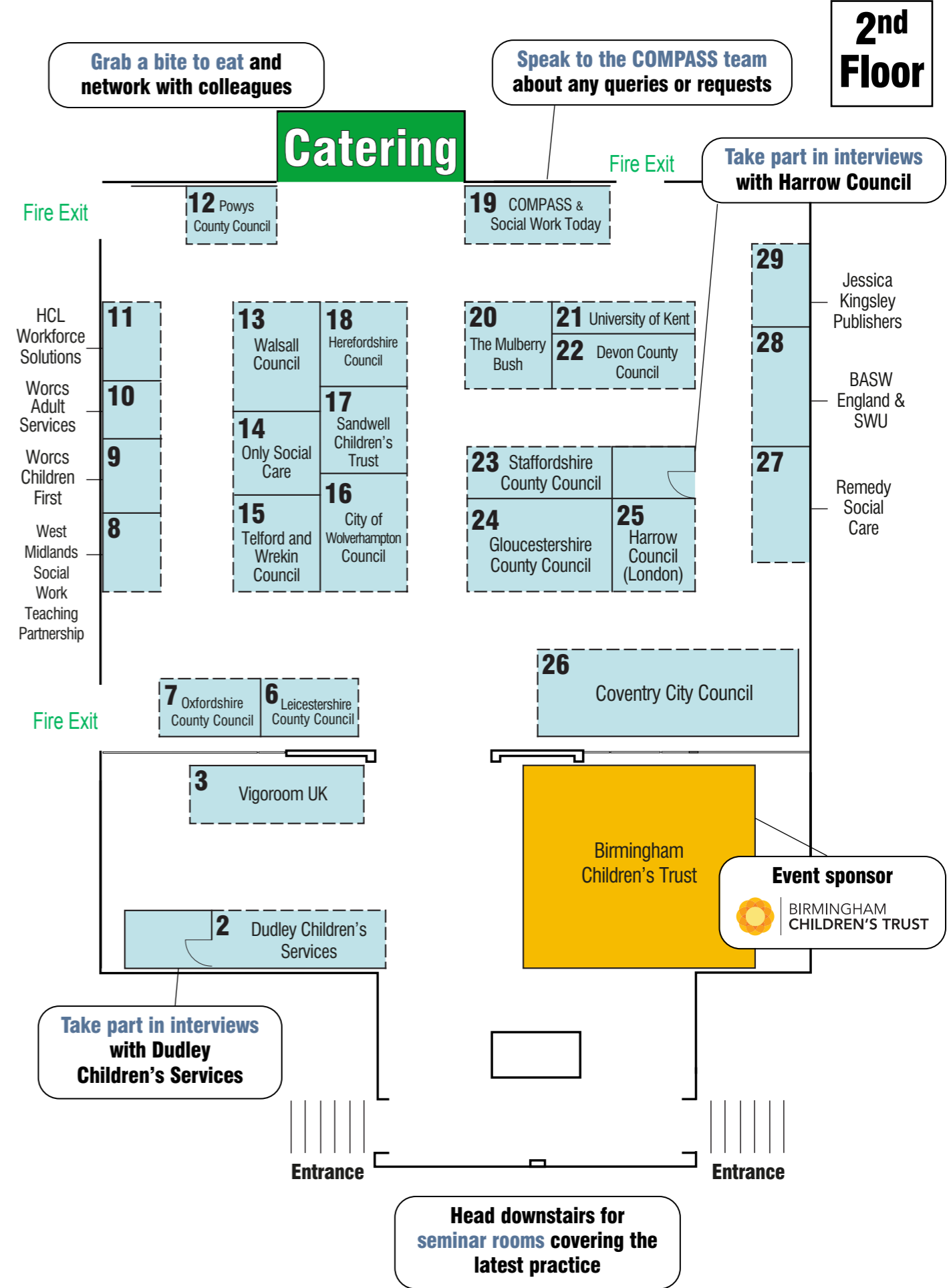
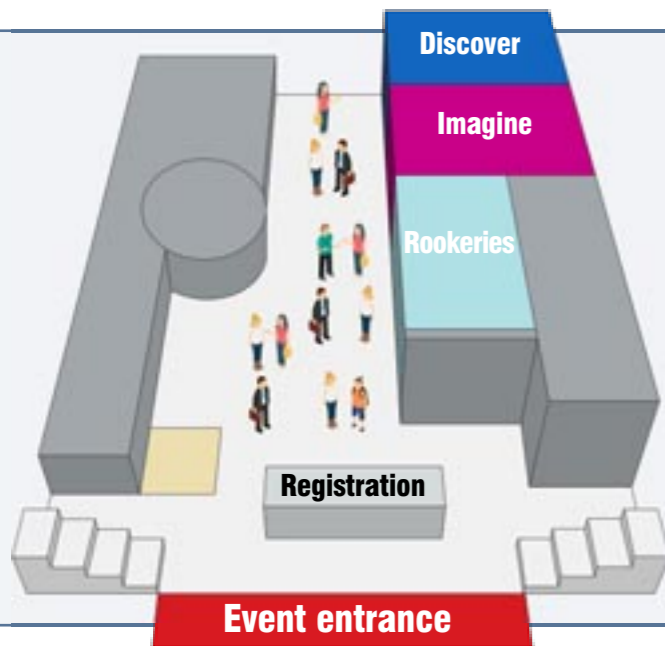
- Innovate**
- Connect**
- Motivate**
- The Social Work Cinema**
- Restrooms**



On this floor

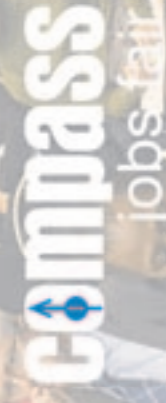
Ground Floor

- Event entrance**
- Registration**
- Discover**
- Imagine**
- Rookeries**



The Social Work Innovations conference

More than 40 seminars, workshops and films



Room Discover

Ground floor

10.30 – 11.10

Making the most of your ASYE year
Staffordshire County Council

11.30 – 12.10

The practical applications of trauma-informed care
Pillars of Parenting
Worcestershire County Council

12.30 – 1.10

Social work in Wales: Legislation, language and culture
Powys County Council

2.00 – 2.40

'Perfect fit': What to look for in a social work employer
VRIC Consulting

3.20 – 4.00

Stress: Who has responsibility?
Vigoroom UK

Room Imagine

Ground floor

10.00 – 10.40

Social work with unaccompanied asylum-seeking children in an increasingly 'hostile environment'
De Montfort University

11.00 – 11.40

Strengths-based practice in action: Putting theory into practice
Worcestershire County Council

12.20 – 1.00

Crossing the Lines: Gangs, knife crime and county lines
University of Kent

1.20 – 2.00

Restorative language and victim blaming across adult and children's services
City of Wolverhampton Council

2.20 – 3.00

Restorative practice: 'Everything looks better in a circle'
Dudley Council

3.20 – 4.00

Changes to the MCA: What we know so far
Staffordshire County Council

Room Rookeries

Ground floor

10.00 – 10.40

'Perfect fit': What to look for in a social work employer
VRIC Consulting

11.10 – 11.50

Exploring the use of Signs of Safety and restorative practice to work with children and families
Coventry City Council

12.10 – 12.50

'Out of the Shadows': The role of social workers in disasters including the pandemic
BASW England

1.10 – 1.50

Your Life Your Story: The gift of care experience
Your Life, Your Story

2.10 – 2.50

Peer reflection in social work
Social Work England

3.10 – 3.50

Homes Not Hospitals: Social work with autistic people
BASW England

Room Innovate

First floor

10.30 – 11.10

Practice Priorities: Building a framework for social work practice and practice leadership
Birmingham Children's Trust

11.30 – 12.10

Best practice with the Family Safeguarding Model
Walsall Council

12.20 – 1.00

'Bosssing it': Standing out in social work interviews
VRIC Consulting

1.10 – 1.50

'Language that Cares': The power of language in work with children and their families
Gloucestershire County Council

2.20 – 3.00

An integrated approach to working with trauma
The Mulberry Bush

3.10 – 3.50

Bringing about change in adult social care: Lessons learned
The IMPACT Centre

Room Motivate

First floor

11.30 – 12.10

The power of relational connection in children's social care: The other half of the ACES story

12.30 – 1.10

"An interview with an ASYE"

1.30 – 2.10

Responding to domestic abuse in practice

2.40 – 3.20

Partnership charity Bfrriends: The journey so far and future aspirations

3.40 – 4.20

A day in the life of a Residential Support Worker

Room Connect

First floor

10.00 – 10.40

Responding to staff wellbeing: The use of clinical supervision in children's social work
Walsall Council

11.00 – 11.40

How to improve stress and working conditions for UK social workers in 2022
Social Workers Union

12.30 – 1.10

How to survive in social work
Vigoroom UK

1.50 – 2.30

New Beginnings: Early help and psychological interventions
Telford and Wrekin Council

3.00 – 3.40

'Bosssing it': Standing out in social work interviews
VRIC Consulting

Room Collaborate

The Social Work Cinema

First floor

10.00

Health and wellbeing of looked-after children and young people

10.30

What does the government's New Plan for Immigration mean for child victims of trafficking?

11.30

Avoiding unnecessary hospital admissions: the headlines

12.00

Safeguarding adults: Looking out for each other to prevent abuse

12.40

Keith's story: A personal and touching film about hoarding

1.00

Mental wellbeing of older people in care homes

1.30

What does the government's New Plan for Immigration mean for child victims of trafficking?

2.30

Avoiding unnecessary hospital admissions: the headlines

3.00

Working together to promote independence

3.40

Keith's story: A personal and touching film about hoarding

4.00

Mental wellbeing of older people in care homes

Morning

Afternoon

Collect your CPD certificate from 4pm

10.30 – 11.10

Making the most of your ASYE year

Hazel Shaw, Workforce Development Trainer and Registered Social Worker, Staffordshire County Council



This seminar will cover what a typical ASYE year involves and what this first year of practice may look like for newly qualified social workers.

It will share learning and practice tips to consider, and provide typical examples of what may be required of you in your first year of practice. Newly Qualified Social Workers currently completing their first year of practice (ASYE year) will share how their first year of social work practice is going and will share some of their learning. Hazel and colleagues will also be available to answer any queries you may have about starting your social work career.

11.30 – 12.10

The practical applications of trauma-informed care

Colin Maginn, Director, Pillars of Parenting



When a child is 'placed in care' the adults in the parental role have a 'duty of care' to use the best knowledge available to ensure that the child receives warm, loving, care which is responsive to each child's individual needs.

Join Colin to discover the practical applications of trauma-informed care and gain a deeper understanding of both the potential, the challenges, the issues and the impact of emotional trauma on the young person by becoming familiar with the knowledge from applied psychology which underpins the 'Emotional Warmth Parenting' approach to professional childcare.

12.30 – 1.10

Social work in Wales: Legislation, language and culture

Jan Coles, Head of Children's Services; and Sharon Powell, Senior Manager, Care and Support, Powys County Council



This seminar will provide an overview of working in Wales as a qualified social worker and the different cultural landscape this entails, touching on the legislation and language, national initiatives, continuing professional development, and 'the Powys perspective'.

Join engaging and experienced presenters Jan and Sharon as they outline career progression opportunities and the journey you can take from being a Newly Qualified Social Worker through to becoming the Head of Service.

2.00 – 2.40

'Perfect fit': What to look for in a social work employer

Steve Stuart, Consultant, VRIC Consulting



Your skills are in demand. But how do you know which role will best support your professional and personal aspirations?

In this innovative session, learn what questions to ask of yourself and any prospective employer to help you achieve your individual goals; identify key documentation to inform your decisions and hear the latest research from VRIC Consulting around social worker career motivations and consider how to interpret the messages from prospective employers.

3.20 – 4.00

Stress: Who has responsibility?

Dr Neil Thompson, Independent Writer, Educator and Adviser & Visiting Professor, The Open University & Vigoroom UK



Vigoroom UK are delighted to be able to invite you to Professor Neil Thompson's seminar on stress and who has responsibility for it. This will give you the opportunity to speak to Neil and to learn about his involvement in Vigoroom UK and the employee wellness service it provides.

Stress is a major problem in today's pressurised workplaces, but what causes it and who is responsible for dealing with it? These are key questions. Well-known social work author Professor Neil Thompson has been writing and teaching about stress for decades. In this presentation he warns against the oversimplified approaches to stress that are very common. He argues that tacking stress in an ill-informed way has the potential to make a bad situation worse.

Dr Neil Thompson will be available at the event for the whole day, so if you can't make the seminar, there will be other opportunities to connect with him.

All exhibitors at this event have an employer profile on the COMPASS website

Information about all COMPASS Jobs Fair, Birmingham exhibitors and advertisers can be found on our website. You can get information about current job vacancies, open days, training opportunities, and new products, as well as follow up on conversations you've had today. Profiles will remain live for one month after this event, so make the most of today and visit www.compassjobsfair.com



Byw, dysgu, gweithio, chwarae ym Mhowys
Live, learn, work, play in Powys



ni i wneud
gwahaniaeth
i fywydau
plant,
pobl ifanc
ac oedolion
yng nghalon
Canolbarth Cymru

make a
difference
to the lives
of children,
young people
and adults
in the heart of
Mid-Wales

Ymunwch â'n tîm cefnogol

Join our supportive team



www.powys.gov.uk/jobs

@PCCvacancies

@PCCJobs



Ground floor

Imagine

10.00 – 10.40

Social work with unaccompanied asylum-seeking children in an increasingly 'hostile environment'

Deborah Hadwin, Senior Lecturer in Social Work,
De Montfort University



The New Plan for Immigration from the majority Conservative government purports to be determined to crackdown on criminal gangs exploiting vulnerable people by smuggling them into the UK for vast profits. The plan, now the Nationality and Borders Bill, not only continues with the Hostile Environment but makes claiming asylum even more difficult. Although the final details of this legislation have not yet been confirmed, it is likely to add further hardship to the lives of unaccompanied young people either as children in the care of the local authority or when they reach adulthood.

This presentation is based on findings from a recent PhD study and considers what children and young people need to thrive and how social workers (and other social care professionals) can navigate some of the practice and ethical issues faced.

11.00 – 11.40

Strengths-based practice in action: Putting theory into practice

Cleo Lapidge, Training and Development,
Worcestershire County Council



This seminar will explore what a strengths-based approach means, and how Worcestershire County Council are applying the Three Conversations Strengths-Based Approach to Social Work. Cleo will demonstrate how this approach aligns with social work values and the Care Act principle of preventing, reducing and delaying the need for social care services. With reference to real stories of supporting people, the session will explore benefits of this approach for creating positive change for people, the social worker and the community in Worcestershire.

12.20 – 1.00

Crossing the Lines: Gangs, knife crime and county lines

Emma Soutar, Training Officer in Child Exploitation, the Centre for
Child Protection, University of Kent



Crossing the lines was developed by the Centre for Child Protection (CCP) in response to the growing issue of gangs, county lines and knife crime. Join Emma for a snapshot view of two of the characters to consider protective factors, the life course approach, reachable moments, and multi-agency working.

The workshop is fully interactive with small group work and whole group discussion and uses the innovative teaching & learning methods created by Professor Jane Reeves and Professor David Shemmings.

Launch your Social Work Career

National NQSW Conference 2022

A free online conference
for final year students on
www.socialworktoday.co.uk

25 - 29 April



Social Work Today is hosting this conference to give you the opportunity to speak to your first social work employer.

We will provide live and pre-recorded webinars for students to engage with a range of social work professionals who work at local authorities and want to discuss your first job with you.

Students can learn more about local authorities' practice principles, including what makes them different and the key areas they focus on with Newly Qualified Social Workers, as well as the support and training they will provide as your ASYE progresses.

This week-long conference will allow final year students to engage with experts from Social Work and Social Care Academies from Local Authorities across the country, providing insight into the schemes they offer Newly Qualified Social Workers embarking on their ASYE, sharing advice to help you find the best match as you launch your social work career.

Engage and collaborate with a range of local authorities including:

- Coventry City Council
 - Devon County Council
 - Hampshire County Council
 - Hull City Council
 - Knowsley Council
 - Northumberland County Council
 - Stoke-on-Trent Council
 - West Sussex County Council
 - Wiltshire County Council
- plus many more...



Ground floor

Imagine

1.20 – 2.00

Restorative language and an introduction to victim blaming across adult and children's services

Jennifer Rogers, Principal Social Worker; and Megan Rimmer, Senior Restorative Practice Lead, City of Wolverhampton Council



This session will explore the importance of language, in particular, restorative language, which promotes speaking and listening skills, as well as encourages open dialogue. Restorative language can also help in resolving conflict through focusing on the impacts of the action and what both parties can do moving forward. Also covered will be a discussion of 'victim blaming' and the effects this can have in practice, whether working with children or adults.

2.20 – 3.00

Restorative practice: 'Everything looks better in a circle'

Mike Hayward, Service Manager for Professional Practice, Dudley Council



Restorative practice is a key element of Dudley's ambition to become a child friendly town. Restorative practice forms the foundations of Dudley Council's organisational culture and provides a framework for practice with children, young people and their families.

Restorative practice provides staff with a range of language, behaviours and tools that strengthen relationships with children, young people, families, communities, the organisation's partners and its workforce. Circles are a key restorative process that helps build a culture of empathy through encouraging listening, respectful communication and the sharing of power. Circles can be used in a range of situations, including team meetings, multiagency meetings, as well as meetings with young people, families and carers.

This session will explore the power of circles and their use to empower solution-focused practice to support positive change.

3.20 – 4.00

Legal Update: Changes for the Mental Capacity Act: What we know so far (pre-recorded)

Ruth Martin, Principal Social Worker, Staffordshire County Council



Ruth will provide an update on the changes brought about by the Mental Capacity (Amendment) Act 2019, and the latest news on the replacement scheme for DoLS, The Liberty Protection Safeguards [LPS].

A national conference for
social work and
social care professionals

The **Social Work** Show

Hilton Deansgate Manchester
3 October 2022

"I attended this event last year and due to a very helpful and insightful experience I promised myself to commit to this every year! I am pleased to say that again I am feeling more enriched with knowledge and support which is so valuable."

Social Worker

A COMPASS event
compass
events • publications • training

www.compassjobsfair.com
t.01892 784804

Ground floor

Rookeries

10.00 – 10.40

'Perfect fit': What to look for in a social work employer

Steve Stuart, Consultant, VRIC Consulting

Your skills are in demand. But how do you know which role will best support your professional and personal aspirations?

In this innovative session, learn what questions to ask of yourself and any prospective employer to help you achieve your individual goals; identify key documentation to inform your decisions; hear the latest research from VRIC Consulting around social worker career motivations and consider how to interpret the messages from prospective employers.



11.10 – 11.50

Exploring the use of Signs of Safety and restorative practice to work with children and families

Dinesh Ranchhod, Signs of Safety Implementation Manager; and James Orchard, Restorative Practice Lead, Coventry City Council

This seminar will give a brief overview of 'the Coventry Way' to working with children and families; with speakers presenting how they are strengthening their Signs of Safety approach in a restorative and relational way to support their work with children and families.

At the end of this presentation, attendees will have a better understanding of the ethos that Signs of Safety is "what we do" and restorative and relational practice is "how we do it".



12.10 – 12.50

'Out of the Shadows': The role of social workers in disasters including the pandemic

Maris Stratulis, National Director, BASW England; and Angie Bartoli, Principal Lecturer in Social Work, Nottingham Trent University

This seminar will discuss the role of the social worker in disasters and the role played during the pandemic and also explore stories from social workers and people of lived experience, which have been collected for a new book 'Out of the Shadows'.

BASW England has been working with stakeholders and people of lived experience to develop resources and guidance for social workers working in emergency planning. In March, BASW will launch 'Out of the Shadows' a new book which focuses on the voices of both social workers and survivors who have experienced disasters including Hillsborough, Grenfell, the Manchester Arena Bombing and Kegworth Air Crash.





Social Work Today

The website

www.socialworktoday.co.uk

- Social Work News
- Online events
- Interviews and informal chats
- CPD through online conferences
- Recruitment days

Media partners



The e-newsletter

Sent daily to 20,000 professionals

- Free access to great content
- Hear about the latest news, practice developments and research updates
- Discover the latest online events and multimedia sessions including career development programmes, webinars and online interviews
- Receive information about the latest job openings, giving you a head-start in finding the next step in your career
- Gain access to exclusive content, including legal training articles, professional development updates, and new practice initiatives

Flexible solutions for successful sector connections

Subscribe for free
www.socialworktoday.co.uk

- SocWorkToday
- Social Work Today
- Social Work Today

Get in touch

07841 919710

advertise@socialworktoday.co.uk

www.socialworktoday.co.uk/advertise



Ground floor

Rookeries

1.00 – 1.50

Your Life Your Story: The gift of care experience

Saira-Jayne Jones and Amanda Knowles, Your Life Your Story

Your Life Your Story, is a small charity managed by a group of trustees who are care experienced adults, caregivers or both. Collectively they understand the value of creativity and connection, not only in the lives of people who have experienced adversity but also in providing insight for those who work alongside them.

Meet this unique organisation that unites care experienced individuals and caregivers through creativity and the shared journey of care, as well as hearing about the publication of their first anthology and exciting plans for events to celebrate World Social Work Day 2022 at both Salford University & Coventry University.



2.10 – 2.50

Peer reflection in social work

Gavin Moorghen, West Midlands Regional Engagement Lead, Social Work England

Specialist regulator Social Work England has listened to feedback and enhanced the continuing professional development (CPD) requirements, which affect all social workers looking to renew their registration this year.

Join Gavin for an exploration of how the new expectations for CPD recording can bring benefits to the social worker (including the wellbeing of professionals), organisations and the people who receive services.



3.10 – 3.50

Homes Not Hospitals: Social work with autistic people

Liz Howard, Professional Officer, BASW England

The BASW England Homes not Hospitals Campaign is a response to issues with the current system that sees too many autistic people and people with learning disabilities detained in hospital Assessment and Treatment Units (ATUs) or restrictive care arrangements and seclusion units.

A suite of resources for social workers have been co-produced to promote preventative approaches in terms of commissioning, human rights-based practice and the role of social work and legal literacy to reduce the risk of situations from reaching the point of hospital admission. From the perspectives of lived, living and practice experience this session will introduce social workers and organisations to a suite of key and essential resources to be promoted and embedded in social work practice and support human rights-based practice and meet the regulatory professional standards.

This seminar will share good practice and guidance for social workers supporting autistic people and people with learning disabilities to reduce the admission of people to Assessment and Treatment Units by preventing crisis.



10.30 – 11.10

Keynote session

Practice Priorities: Building a framework for social work practice and practice leadership



Jenny Turnross, Director of Practice, Birmingham Children's Trust

Locally and nationally, it's been a challenging time for social work and social workers. Recent tragedies are a reminder of the importance of ensuring that support to those working on the front line is the very best it can be with supervision, learning and development, emotional health and well-being, and trauma-informed support all critical ingredients to making good social work possible in difficult times.

Join Jenny Turnross, Director of Practice, Birmingham Children's Trust for a discussion about the practice priorities for social workers in Birmingham over the coming years and how this will provide a framework for social work practice and practice leadership.

11.30 – 12.10

Best practice with the Family Safeguarding Model



Claire Jervis, Team Manager for Practice and Partnership Development; and Antony Schaffarczyk, Principal Social Worker, Walsall Council

The Family Safeguarding Model (FSM) is a whole system reform of child protection services, bringing professionals and families together as one team with the shared aim of helping the family raise their children in a safe way. There are Adult Specialist Workers with expertise in mental health, domestic abuse and substance misuse integrated within social work teams. FSM draws upon strengths-based approaches such as Motivational Interviewing and Restorative Practice that reinforce our current social care practice. Join Claire and Anthony as they share experiences of the model and advice for how you can implement its values into your own practice.

12.20 – 1.00

'Bossing it': Standing out in social work job interviews



Steve Stuart, Consultant, VRIC Consulting

In this seminar, maximise your performance in interviews with a number of different techniques. With 17 years supporting the recruitment of social workers for the public and private sector as a social work workforce strategist, Steve will draw on his experience to guide you on the best practice before the interview, on the day of the interview and during the interview itself, including a discussion of the 'seven deadly sins' to avoid.

Whether for your first ever role, a move into management or a senior leadership position, learn about how to prepare and present yourself in this fun and engaging session.

1.10 – 1.50

'Language that Cares': The power of language in work with children and their families



Rob Tyrrell, Principal Social Worker, Children and Families; and Eliza, Ambassador for Vulnerable Children; and Henry Ambassador for Vulnerable Children, Gloucestershire County Council

Ambassadors from Gloucestershire Children's Services have been at the forefront of the Language that Cares campaign which has inspired and challenged staff locally and achieved national recognition and awards. Ambassadors will share an overview of Language that Cares, and the importance of ensuring that you 'think before you write' in a conversation with Rob Tyrrell Principal Social Worker. Rob will be joined by practitioners from a safeguarding team who will share practice examples and how they have worked to build dialogue and activity in their service that pays attention to the principles of Language that Cares and the opportunities this can create.

The seminar will conclude with ideas and resources to encourage 'next steps' and how attention to Language that Cares can support more purposeful and productive direct work with children and their families and carers; create a more relationship-focused practice; and provide better, more inclusive assessment, plans and recording for children.

2.20 – 3.00

An integrated approach to working with trauma



John Diamond, CEO, The Mulberry Bush

For many years The Mulberry Bush Charity has been well known for its therapeutic work with traumatised children and families at The Mulberry Bush School, but through ambitious strategic planning the Charity now has a broader aim to transform the lives of all those affected by childhood trauma through specialist therapeutic services.

This seminar presented by John Diamond CEO, will cover the new and growing integrated work of The Mulberry Bush Charity, with reference to our School, Outreach and Research services, and the work of The Mulberry Bush Third Space.

3.10 – 3.50

Bringing about change in adult social care: Lessons learned



Jon Glasby, Professor of Health and Social Care, University of Birmingham

Join Jon Glasby, Professor of Health and Social Care at the University of Birmingham in a discussion around the new IMPACT Centre (IMProving Adult Care Together) for implementing evidence in adult social care, funded by the Economic and Social Research Council (ESRC) and the Health Foundation. Jon will discuss what IMPACT is doing, sharing insights from the centre's national work and the lessons learned around what helps to bring about change in adult social care.

11.30 – 12.10

The power of relational connection in children's social care: The other half of the ACEs story

Lara Timms, Principal Social Worker; and Marie Kershaw, Clinical Psychologist, Birmingham Children's Trust

Adverse Childhood Experiences (ACEs) are stressful events occurring in childhood, which could include domestic violence, a parent with a mental health condition, or being the victim of abuse or neglect, among other things.

Studies have found that as the number of ACEs increased in the population studied, so did the risk of experiencing a range of health conditions in adulthood.

Join Lara and Marie as they explore the significance of ACEs in relation to children's social care and how relational practice can be used to improve outcomes.



12.30 – 1.10

“An interview with an ASYE”

Sophie Gilbert, Practice Academy Manager, Birmingham Children's Trust

In this seminar, Birmingham Children's Trust will talk with newly qualified social workers about their transition from student to social worker.

The session will also include top tips for those about to begin their Assessed and Supported Year in Employment (ASYE) and what working as a newly qualified social worker really looks and feels like.



1.30 – 2.10

Responding to domestic abuse in practice

Nikki Plummer, Domestic Abuse Lead Manager, Birmingham Children's Trust

This seminar will outline best practice and the core principles when working with victim-survivors of domestic abuse including how to hold the abusive partner to account in a safe way and as a parent and how to assess the impact of abuse on children.

The session will include a consideration to the impact of intersectionality, as well as how to partner with the non-abusive parent and identify patterns of abusive behaviour and how to recognise and understand the protective efforts of the non-abusive parent and build in additional safety planning.

Join Nikki for this unique look at social work practice in these cases.



2.40 – 3.20

Partnership charity Bfriends: The journey so far and future aspirations

Natalie Loon, Operations and Fundraising Manager, Birmingham Children's Trust; and Samantha Yetunde Richards, Trustee, Bfriends Charity

'Bfriends - Friends of Birmingham Children's Trust' is an independent charity established in November 2021. The charity works with its networks of partners, businesses, and the community to provide a range of opportunities and experiences for children and adults known to Birmingham Children's Trust. In this seminar Natalie Loon, Operations and Fundraising Manager, will share Bfriends' exciting journey so far and its aspirations for the future. Natalie will be joined by Bfriends Trustee Samantha Yetunde Richards who will also share some of the charity's aspirations as part of its community activity.



3.40 – 4.20

A day in the life of a Residential Support Worker

Melanie Page, Head of Residential Service, Birmingham Children's Trust; and Julie Clarke, Registered Manager

Join Melanie as she gives an insight into working within Birmingham Children's Trust's children's residential homes including the advice, assistance and support they provide to young people, and how they work closely with children to enable them to address their difficulties and achieve their potential. Find out more and ask questions about this challenging and rewarding role.



WHY WORK FOR WORCESTERSHIRE CHILDREN FIRST?

Stable and supportive workforce – we have a 99% permanent management team and our social workers tell us they feel supported and that their health and wellbeing are taken into account

Continuous Professional Development (CPD) - we work with our Principal Social Worker and Social Work Academy to ensure we are providing the best learning and development opportunities

Unique teams - We have a good mix of different social care teams that work with children and young people in different ways; giving you a wide choice of experiences and opportunities to progress your career and learning.

Scan the QR code to see our latest social work vacancies.



Scan me with your smart phone

www.worcschildrenfirst.org.uk


@WORCSCHILDREN

WORCESTERSHIRE CHILDREN FIRST







10.00 – 10.40

Responding to staff wellbeing: The use of clinical supervision in children's social work

Tina Muctor, Practice Development Coordinator; and Antony Schaffarczyk, Principal Social Worker, Walsall Council



Walsall Children's Services will share details of a pilot project centred around staff wellbeing. Social workers and social work teams were enabled access to clinical supervision to help promote wellbeing, enhance practice and lead to a healthier and supported workforce. Tina and Anthony will share with you how they are developing this new model, the responses they have had and how practitioners are utilizing this support to date.

11.00 – 11.40

How to improve stress and working conditions for UK social workers in 2022

Professor Jermaine Ravalier, Bath Spa University; and John McGowan, General Secretary, Social Workers Union



Over the pandemic, there has been a distinct change in how social workers undertake their role and juggling home/work life has become an ever-increasing issue. The results of the 2022 re-launched Social Work 'Working Conditions and Wellbeing'. The presentation will (independently, and academically) look at working conditions in social work now – and how they have changed since 2018 and 2019, when we last conducted this survey.

Having taken previous work to Westminster, with over 20 MPs signing to say they will support their work for professional working conditions in social work, the Social Workers Union had a debate in the House of Lords and led a national Campaign for Professional Working Conditions. Using the findings from the last survey, in addition to over 50 individual interviews with social workers, to co-develop the Social Worker Wellbeing and Working Conditions good practice Toolkit in June 2020, the union wants to build on all of this work and momentum which is needed once more.

Informal interviews will be taking place at the event for a range of posts in social work and social care

Exhibition stands will have space for private discussions and interviews for a variety of roles of qualified social workers. You will find these marked on the stand plans on page 19.

12.30 – 1.10

How to survive in social work

Dr Neil Thompson, Independent Writer, Educator and Adviser & Visiting Professor, The Open University & Vigoroom UK



In this session, renowned author Neil Thompson talks about what is needed to survive in today's highly pressurised social work world.

Join Neil as he discusses how employers and employees need to work together to produce working conditions that are both caring and effective. He acknowledges that there are no magic answers but argues that there is much that can be done to help people not only survive, but actually aim for thriving.

1.50 – 2.30

New Beginnings: Early help and psychological interventions

Louise Spragg, Principal Social Worker, Telford and Wrekin Council



New Beginnings is an attachment-based group intervention for parents and infants aimed to strengthen the relationship between parents and their babies through improved sensitivity, mentalizing, and knowledge of infant development.

This seminar will explore the delivery of early help and psychological interventions to support new parents known to statutory services before reaching crisis point.

By understanding the importance of early intervention treatment, we can improve the quality of children's home lives and family relationships, increase educational attainment and support good mental health.

3.00 – 3.40

'Bossing it': Standing out in social work interviews

Steve Stuart, Consultant, VRIC Consulting



In this seminar, maximise your performance in interviews with a number of different techniques. With 17 successful years supporting the recruitment of social workers for the public and private sector as a social work workforce strategist, Steve will draw on his experience to guide you on the best practice before the interview, on the day of the interview and during the interview itself, including a discussion of the 'seven deadly sins' to avoid.

Whether for your first ever role, a move into management or a senior leadership position, learn about how to prepare and present yourself in this fun and engaging session.

As an innovative way of extending our free programme, COMPASS offers a selection of short films covering a wide range of topics.

Health and wellbeing of looked-after children and young people

10.00
NICE

The NICE Collaborating Centre for Social Care (NCCSC) has produced a short film aimed at children and young people in care to help them understand and use the NICE quality standard on the Health and Wellbeing of Looked After Children and Young People in Care.

What does the government's New Plan for Immigration mean for child victims of trafficking?

10.30 & 1.30
ECPAT UK

Catch up with a panel discussion of what the government's New Plan for Immigration means for child victims of trafficking, with expert speakers including: Kamena Dorling, Head of Policy and Advocacy at Article39; Phillipa Roberts, Director of Legal Policy and Solicitor at Hope for Justice; and Andy Sirel, Partner and Legal Director at JustRight Scotland.

Avoiding unnecessary hospital admissions: The headlines

11.30 & 2.30
SCIE

This film looks at the realities behind the headlines about older people and their use of hospital beds, and considers what steps could be taken to help avoid unnecessary admissions.

Working together to promote independence

12.00 & 3.00
SCIE

This is a film showing how some of the principles of the SCIE/NICE guidance on promoting the health and well-being of looked-after children are working in practice. The film focuses on two schemes for care leavers which are helping to support them in their move to independence. Two young people talk about their needs and fears of moving to independence, whilst their service managers talk about how they have organised a service which meets their requirements.

Safeguarding adults: Looking out for each other to prevent abuse

12.20 & 3.20
SCIE

This video shows how good communication with older people can improve safeguarding. In residential care it is important that staff take the time to talk to residents and to listen to their concerns. Two community projects demonstrate how people are encouraged to look out for each other and to report any concerns.

Keith's story: A personal and touching film about hoarding

12.40 & 3.40
Birmingham City Council
Safeguarding Adults Board

The Birmingham Safeguarding Adults Board has produced a film to raise awareness of hoarding and to guide professionals on what kinds of interventions seem to work the best so that the people affected (both the person who hoards and other people whose lives this impacts upon) get the support that they need.

Mental wellbeing of older people in care homes

1.00 & 4.00
NICE

A film commissioned by the NICE Collaborating Centre for Social Care (NCCSC) will help organisations and people use the quality standard on mental wellbeing of older people.

This covers the mental wellbeing of older people (aged 65 and over) receiving care in care homes (including residential and nursing accommodation, day care and respite care). It focuses on support for people to improve their mental wellbeing so that they can stay as well and independent as possible. It describes high-quality care in priority areas for improvement.

Please note that spaces for these sessions will be allocated on a first-come, first-served basis

Don't forget to collect your CPD certificate from the organisers on Stand 19 from 4.00pm – 4.30pm

compass
jobs fair

Media partner



Social Work Today

The leading social work events in the UK

20 March 2023

Save the date for next year's event



Don't miss other events in London this year

9 May 2022 | 21 November 2022

Register for your free ticket now at www.compassjobsfair.com

Based over 3 floors, there are 9 rooms hosting seminars, workshops, and films designed to highlight developments in the social work profession and keep you up-to-date with the latest practice.

Speak to 30+ exhibitors about job and training opportunities, as well as details of new social work projects and the latest publications and sector products.

More than 40 seminars, workshops and films taking place throughout the day for professionals who work with children and families, adults, or mental health. Gain a full day of CPD at the event and discuss the latest social work practice issues with colleagues from across the UK.

Take part in interviews with exhibitors who have divided their space to be part exhibition and part interview room. Informal conversations in a private area attached to their exhibition stand can speed up the recruitment process and help you to get your next job at the event.

"The exhibition was insightful, and I enjoyed meeting all the different local authorities. The event is great for networking and learning more about different employers and their current vacancies."

Social Worker

"There was an interesting choice of seminars and the speakers were very knowledgeable. It was extremely helpful and interesting listening to people with lived experiences."

Senior Social Worker

Registration is already open, so get your free ticket to Birmingham's biggest social work event in 2023 at www.compassjobsfair.com

20 March 2023

Birmingham Conference and Events Centre

Media partner



Social Work Today



The
Mulberry Founded 1948
Bush School

Showing the way in therapeutic child care



The specialist residential therapeutic provision for traumatised children aged 5-13

- Real placement stability for hard to place and at-risk children aged 5-13
- Genuine early intervention with excellent evidenced outcomes
- Integrated therapeutic provision with on site education
- Working in close partnership with families and referring authorities
- 38 and 52 week placements available

“Outstanding”

– Ofsted

For referrals contact Angus Burnett:

aburnett@mulberrybush.org.uk

or call 01865 300202 ext. 228

Registered Charity Number: 309565

mulberrybush.org.uk